

Binding Navigator Example

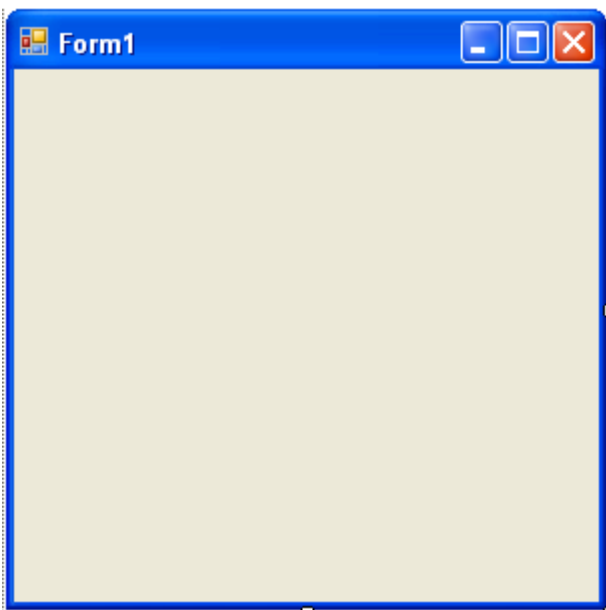
Document ID : Binding_Navigator_Example.PDF
Author : Michele Harris
Version : 1.1
Date : 2009-06-17

Table of Contents

BN_Example_SLM	2
Add An Existing Project: DAO	2
Add an Existing Project: Reusable	5
Adding References for Project DAO.....	6
Adding References for Project Reusable.....	8
Adding the Binding Navigator	9
Adding the Code	9
Debugging.....	10
Troubleshooting.....	10

BN_Example_SLM

In this example, we're going to create a Binding Navigator. A Binding Navigator is a toolbar that lets us easily "travel" through our DataSet. To begin, open Visual Studio, click File, and select "New Project." Visual Studio will prompt you to select a type of project. You'll want to choose "Windows Form" and name it "BN_Example_SLM." You should begin with a form similar in appearance to the one below.



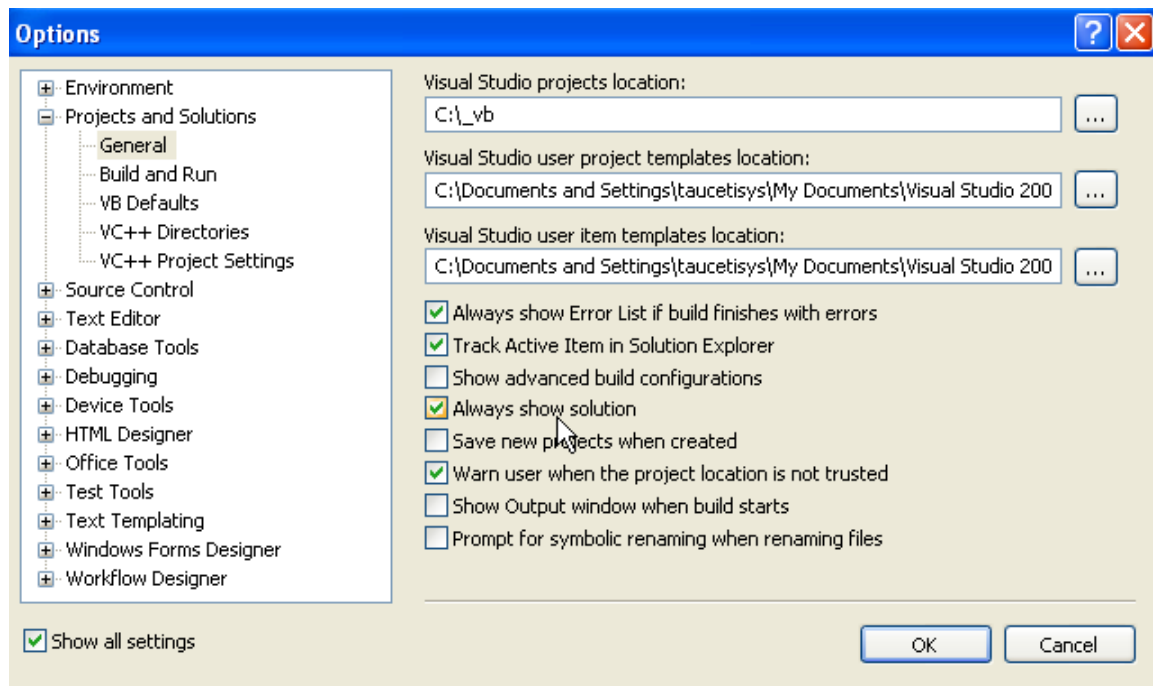
Add An Existing Project: DAO

Before adding any code for this project, you'll need to add two existing projects.

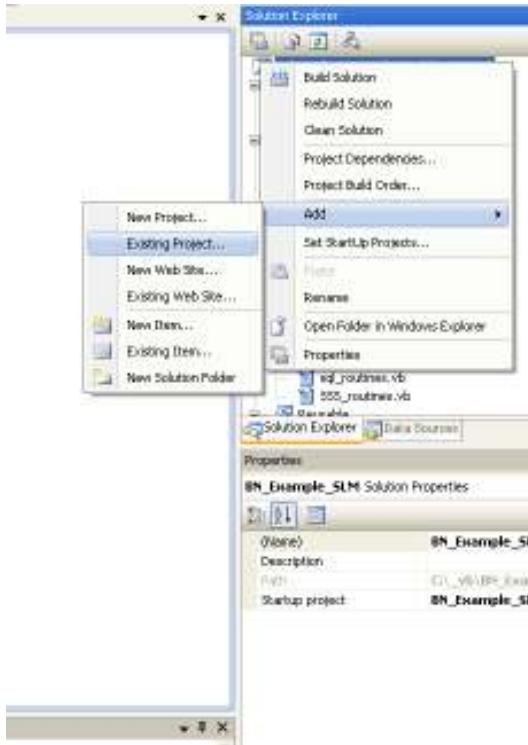
First, ensure that the solution is displayed. On the Menu bar, go to Tools:

Options. Expand "Projects and Solutions" and click on the sub-heading "General.

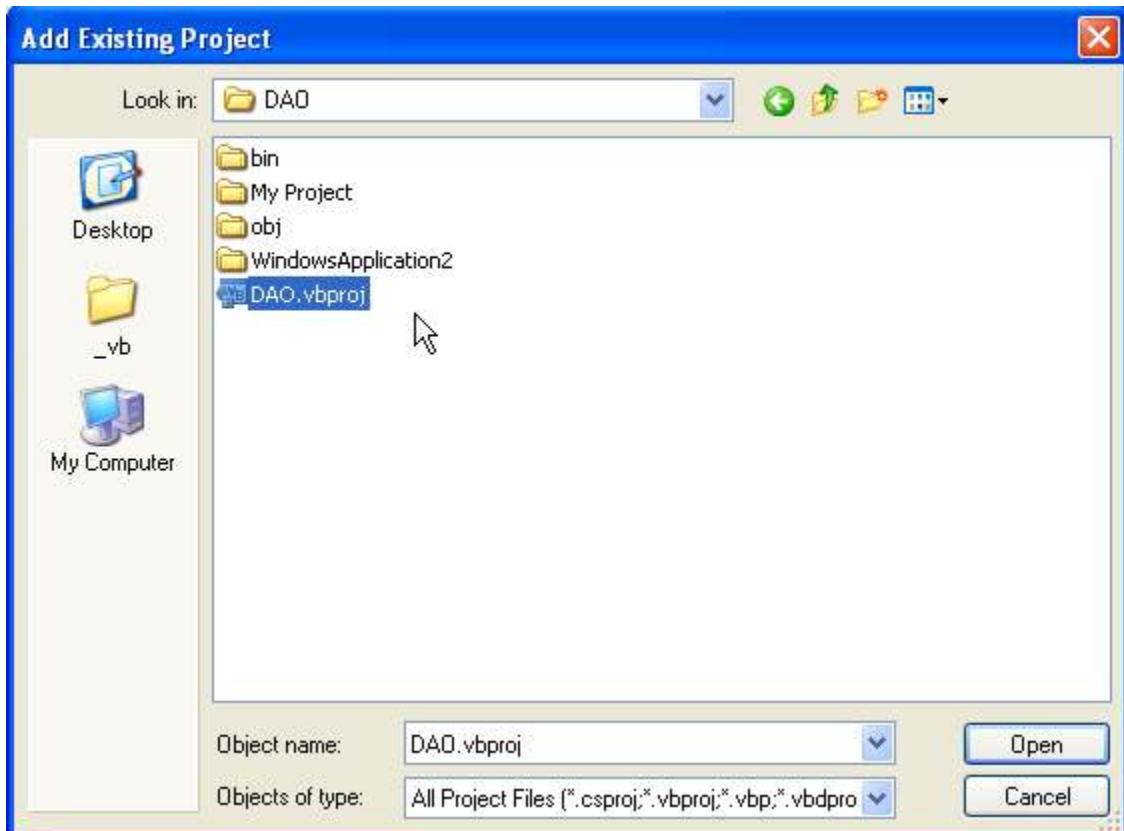
You're going to see a screen much like the following.



Make sure the “Always show solution” option is selected, and click OK. Now go to the Solution Explorer on the right side of your screen. You should now see a header at the top displaying the text “Solution ‘BN_Example_SLM’ (1 Project)”. Right click this heading, and select Add: Existing Project, as displayed below.



If you're sure you've already downloaded the DAO file on a different occasion, select DAO.vbproj from the DAO folder in C:_VB. Otherwise, go to [\\lynx\c_VB\DAO\DAO](http://lynx/c/_VB/DAO/DAO) and select DAO.vbproj.



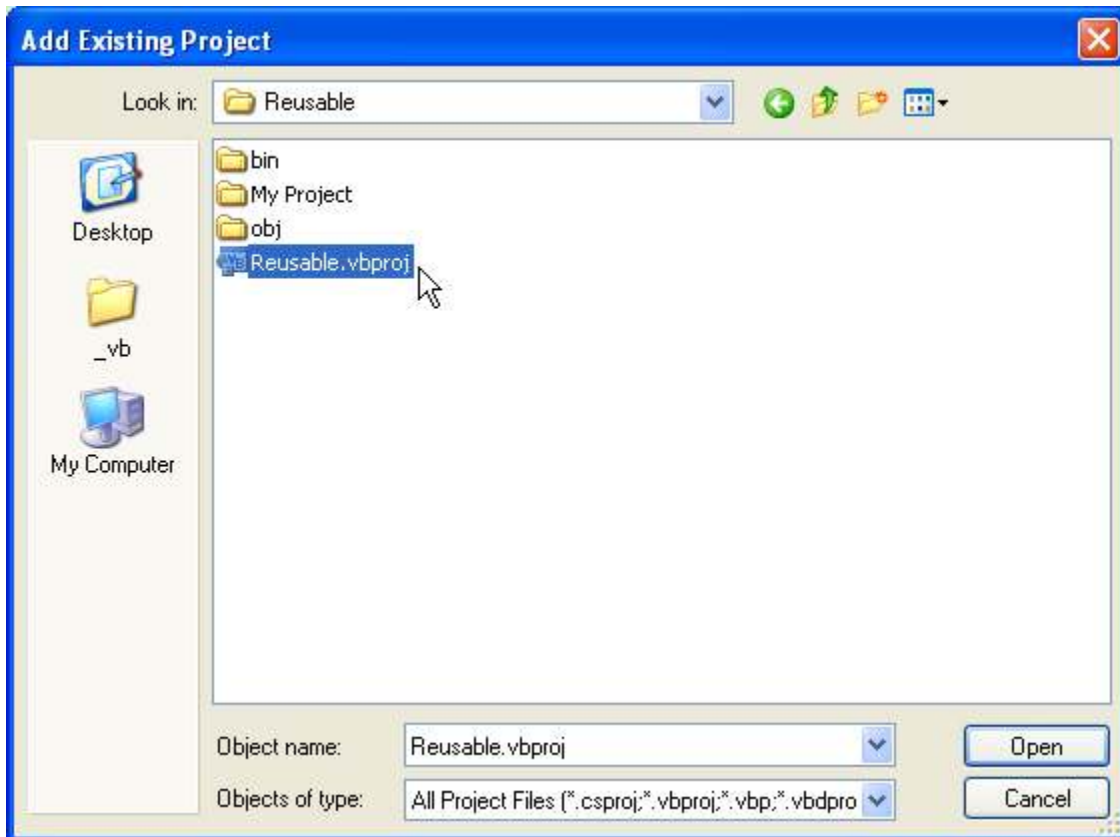
Click Open, and you should see the Solution Explorer fill with a number of new DAO files.

Add an Existing Project: Reusable

The steps for adding another existing project are nearly identical those above.

Right click the "Solution 'BN_Example_SLM' (1 Project)" heading in the Solution Explorer, and select Add: An Existing Project.

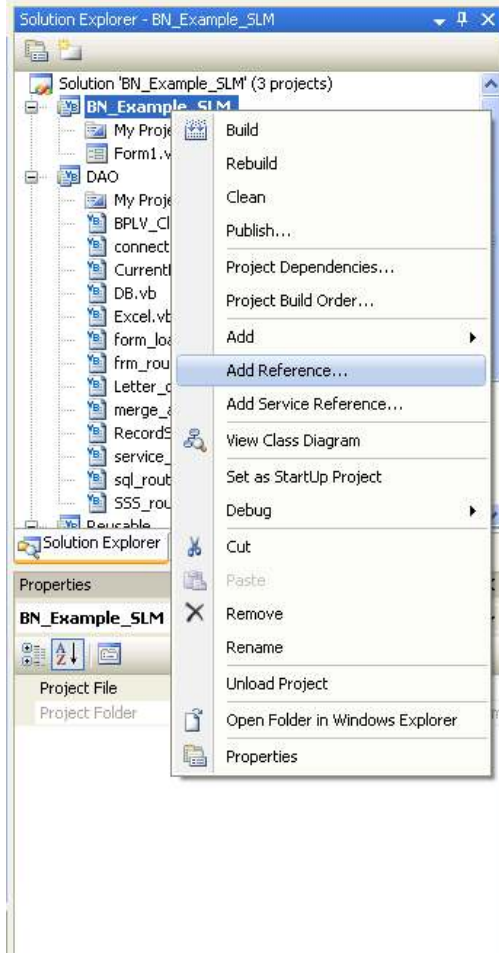
If you're sure you've already downloaded the Reusable file on a different occasion, select Reusable.vbproj from the Reusable folder in C:_VB. Otherwise, go to [\\lynx.c_vb\Reusable](http://lynx.c_vb\Reusable).



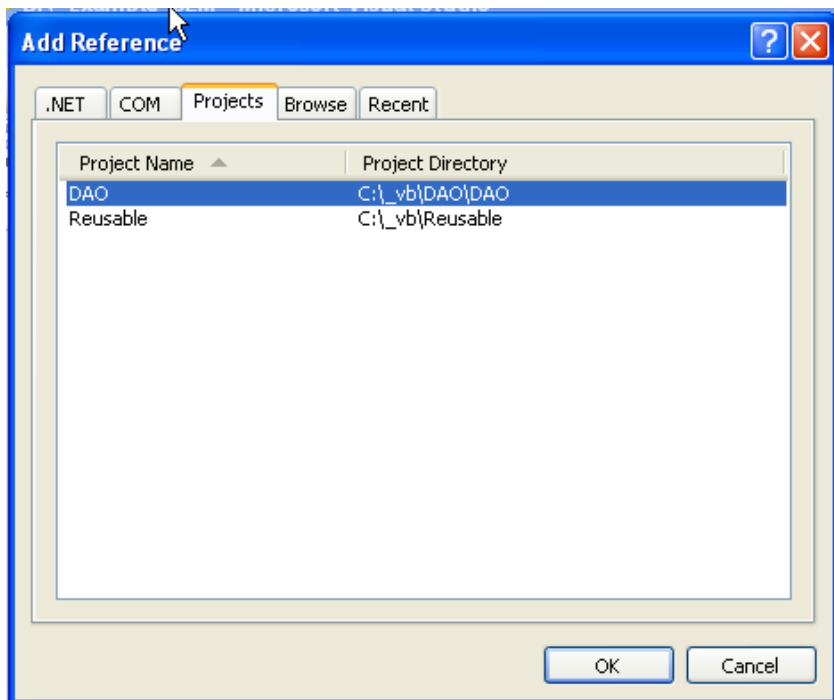
Click Open, and you should see the Solution Explorer fill with files from the Reusable Project.

Adding References for Project DAO

To fully integrate the two projects you've added into the Binding Navigator Example, you'll need to add their references. Find the "BN_Example_SLM" heading in the Solutions explorer. Right click it, and select "Add Reference."



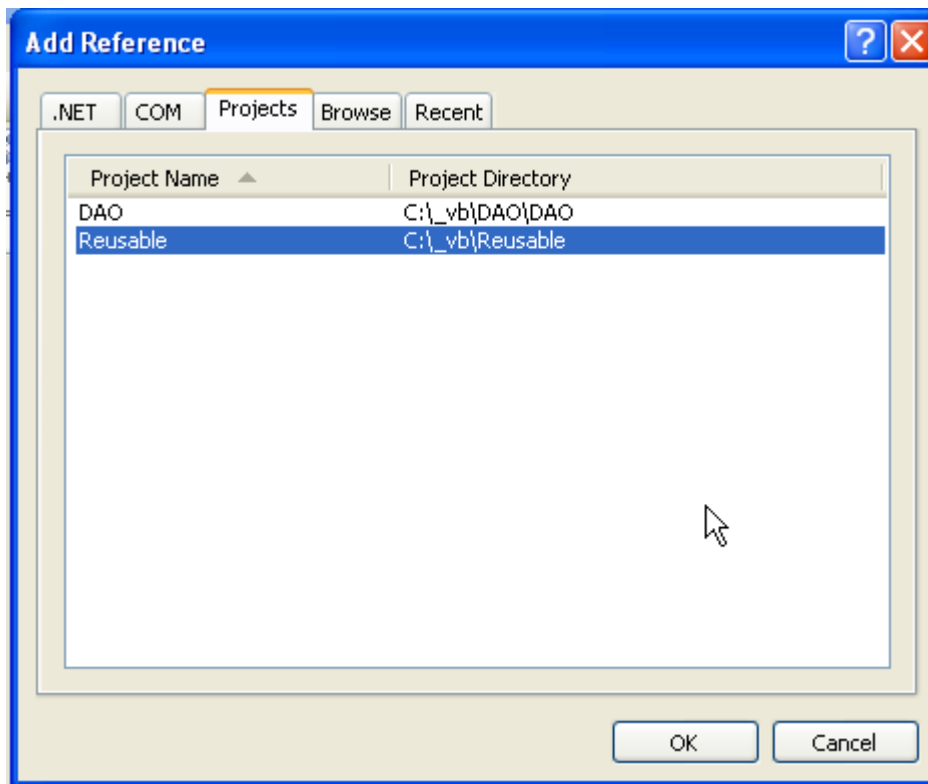
An Add Reference Dialog Box will pop up. You'll see five tabs at the top of the screen. Click on the one that says "Projects." Select project DAO, and click OK.



Adding References for Project Reusable

The steps for adding the Reusable project are nearly identical to those above.

First, you'll want to right click on the "BN_Example_SLM" in the Solutions Explorer. Select "Add Reference," and the same Dialog Box you previously saw should pop up. Under the tab "Projects," select "Reusable, and click OK.



Adding the Binding Navigator

Before entering the code, you'll want to add a binding navigator to your form. To do this, go to the ToolBox, and under the Data listing, double click "Binding Navigator."

Adding the Code

Now it's time to enter the code for your Binding Navigator project. Double click the form (not the Binding Navigator). You should see the following code already present.

```
Public Class Form1
    Private Sub Form1_Load(ByVal sender As System.Object, ByVal e As System.EventArgs) Handles MyBase.Load
    End Sub
End Class
```

Without deleting the code that's already there, you'll want to enter the following.

I've highlighted the existing code for your convenience.

```
Imports SLM.connections.connections_admin
Public Class Form1
    Dim frmr As New frm_routines(Me, "brr", BindingNavigator1)
    Private Sub Form1_Load(ByVal sender As System.Object, ByVal e As
System.EventArgs) Handles MyBase.Load
        get_connection_name("slm")
        frmr = New frm_routines(Me, "brr", BindingNavigator1)
        frmr.populate_form("brr")
    End Sub
End Class
```

If you face any errors that prevent you from debugging, review your code to ensure that you've entered everything character for character. If you're still encountering errors, see [Troubleshooting](#).

Debugging

Upon Debugging, you should have a functional Binding Navigator! Experiment with it a bit; press the next button to page through additional entries.

Congratulations! You've successfully created the Binding Navigator Example.

Troubleshooting

You might encounter a few error messages while trying to Debug BN_Example.

If so, review the code you typed above to ensure that the error isn't the result of a simple misspelling or omission. If after doing this your error still persists—and the error is linked to the myConnection.Open procedure, as shown below—double check to make sure the **slm.mdb** file has been copied to your C drive. If it hasn't, retrieve **slm.mdb** from [\\lynx\c](#) and copy it to your computer's C drive.
